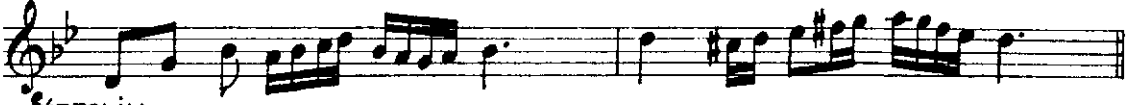


NIHÂVEND SAZ SEMÂİSİ - No: 2

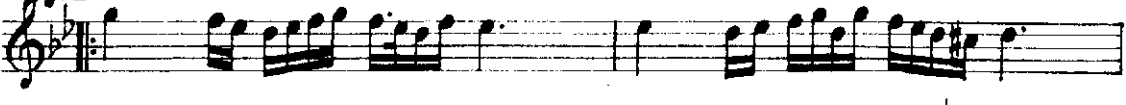
USÛLÜ: Aksak Semâî

Yesârî Âsım
ARSOY

I. HANE



TESLİM



II. HANE



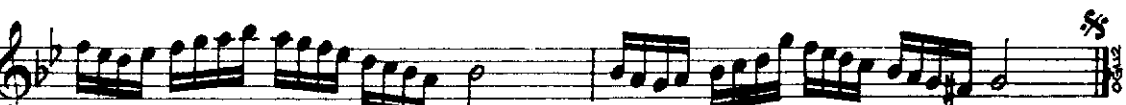
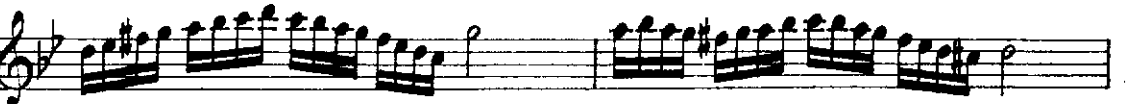
III. HANE



IV. HANE



Yürük Semâî



NIHÂVEND SAZ SEMÂÎSÎ - 2.

A musical score for a single melodic line, likely for a Saz instrument. The score is written on eight staves in a single system. The key signature is one flat (B-flat), and the time signature is 2/4. The notation includes various musical symbols such as eighth notes, quarter notes, half notes, and rests, often grouped with slurs. There are repeat signs with first and second endings in the fifth staff. The piece concludes with a double bar line and a repeat sign in the eighth staff.